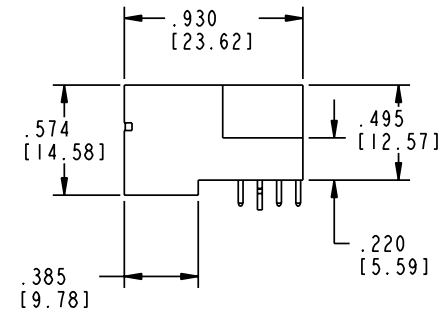
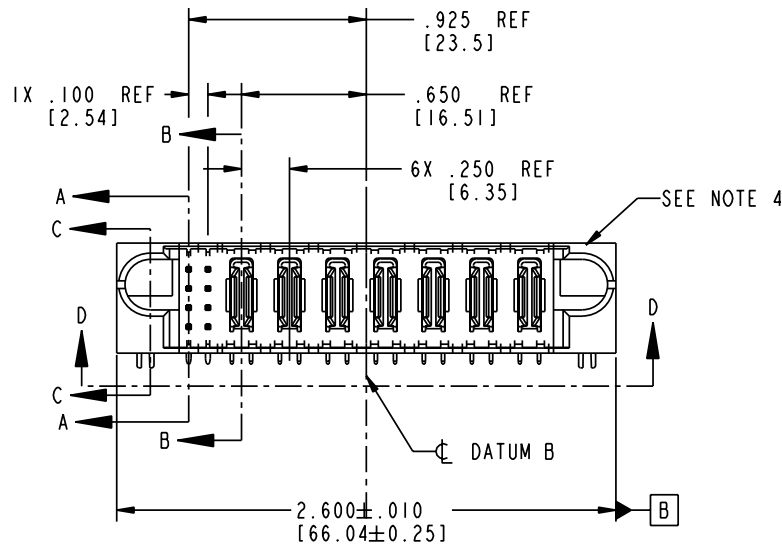
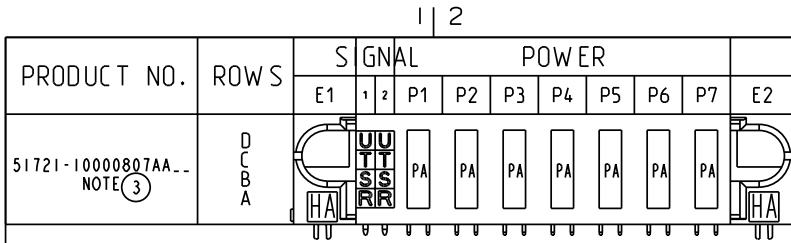


Tous droits strictement réservés. Reproduction ou communication a des tiers interdite sous quelque forme que ce soit sans autorisation écrite du propriétaire. Propriété de c FCI. Droits de reproduction FCI.

All rights strictly reserved. Reproduction or issue to third parties in any form whatever is not permitted without written authority from the proprietor. Property of FCI. Copyright FCI.

**FCI**



CODE	DIM "M" MATING LENGTH	CONTACT TYPE
U	.270 [6.86]	SIGNAL
T	.270 [6.86]	SIGNAL
S	.270 [6.86]	SIGNAL
R	.270 [6.86]	SIGNAL
PA	N/A [N/A]	POWER
HA	N/A [N/A]	HOLD-DOWN

mat'l code				SEE NOTE 2		tolerances unless otherwise specified		CUSTOMER		 www.fciconnect.com	
lfr	ecn no.	dr	date	linear	.XX±.01/0.X±0.3	projection		COPY		title	
A	DG05-0032	SW	02/24/05	angles	.XXX±.005/0.XX±0.13			A		8S + 7P	
					.XXX±.0020/0.XXX±0.051			INCH/MM		RIGHT ANGLE SOLDER HEADER	
				dr	0° ± 2°			scale		product family	
				enrg	STEVEN WANG 02/24/05	1:1		A		PwrBlade	
				chr	STEVEN WANG 02/24/05			size		code	
				appd	VICTOR LIN 02/24/05			A		213	
					JOSEPH HSIA 02/24/05			51721-10000807AA		sheet	
sheet index	revision sheet	A	A	A	A					1 of 4	
		1	2	3	4						

Pro/E

PDM: Rev: A

STAT

code code 22526

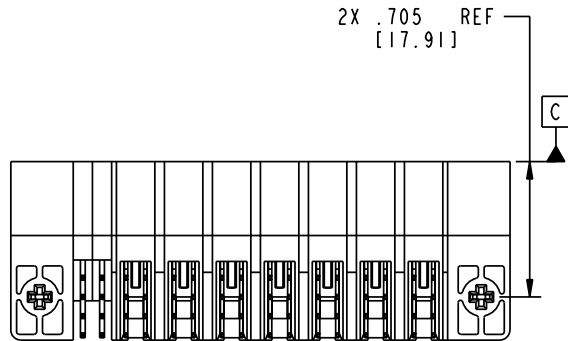
Printed: Aug 12, 2007

Tous droits strictement réservés. Reproduction ou communication a des tiers interdite sous quelque forme que ce soit sans autorisation écrite du propriétaire. Propriété de c FCI. Droits de reproduction FCI.

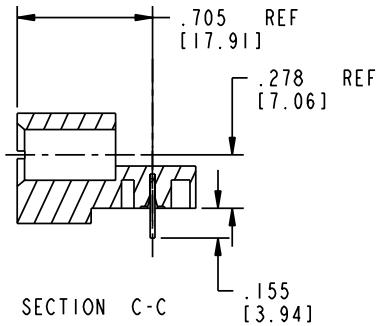
All rights strictly reserved. Reproduction or issue to third parties in any form whatever is not permitted without written authority from the proprietor. Property of FCI. Copyright FCI.

**FCI**

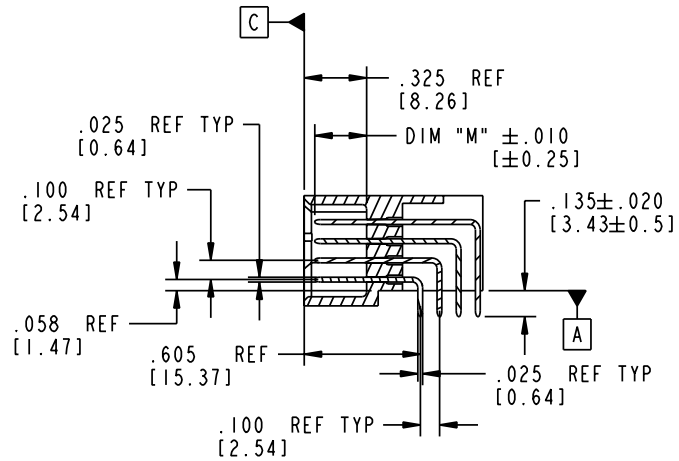
PRODUCT NUMBER  
51721-10000807AA...  
NOTE (3)



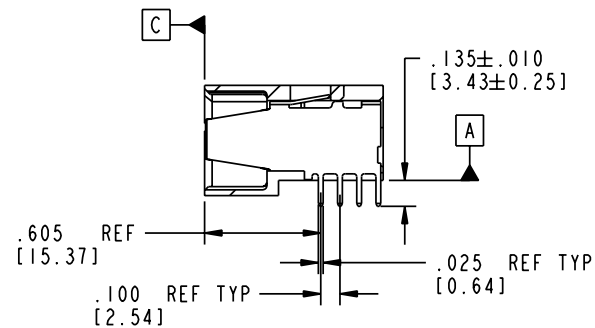
VIEW D-D



SECTION C-C



SECTION A-A



SECTION B-B

mat'l code		SEE NOTE 2		tolerances unless otherwise specified		CUSTOMER		 www.fciconnect.com	
lfr	ecn no.	dr	date	linear	.XX±.01/0.X±0.3	COPY		title	
A				projection	.XXY±.005/0.XX±0.13	 INCH/MM		<b>8S + 7P</b> <b>RIGHT ANGLE SOLDER HEADER</b>	
				angles	XXX±.0020/0.XXX±0.051	 scale		product family	
				dr	0°±2°	1:1		PwrBlade	
				engr	STEVEN WANG 02/24/05			code	
				chr	STEVEN WANG 02/24/05			213	
				appd	VICTOR LIN 02/24/05			sheet	
					JOSEPH HSIA 02/24/05			2 of 4	
sheet index	revision sheet							code code <b>51721-10000807AA</b>	

Pro/E

PDM: Rev: A

STAT: ~~Released~~ 22526

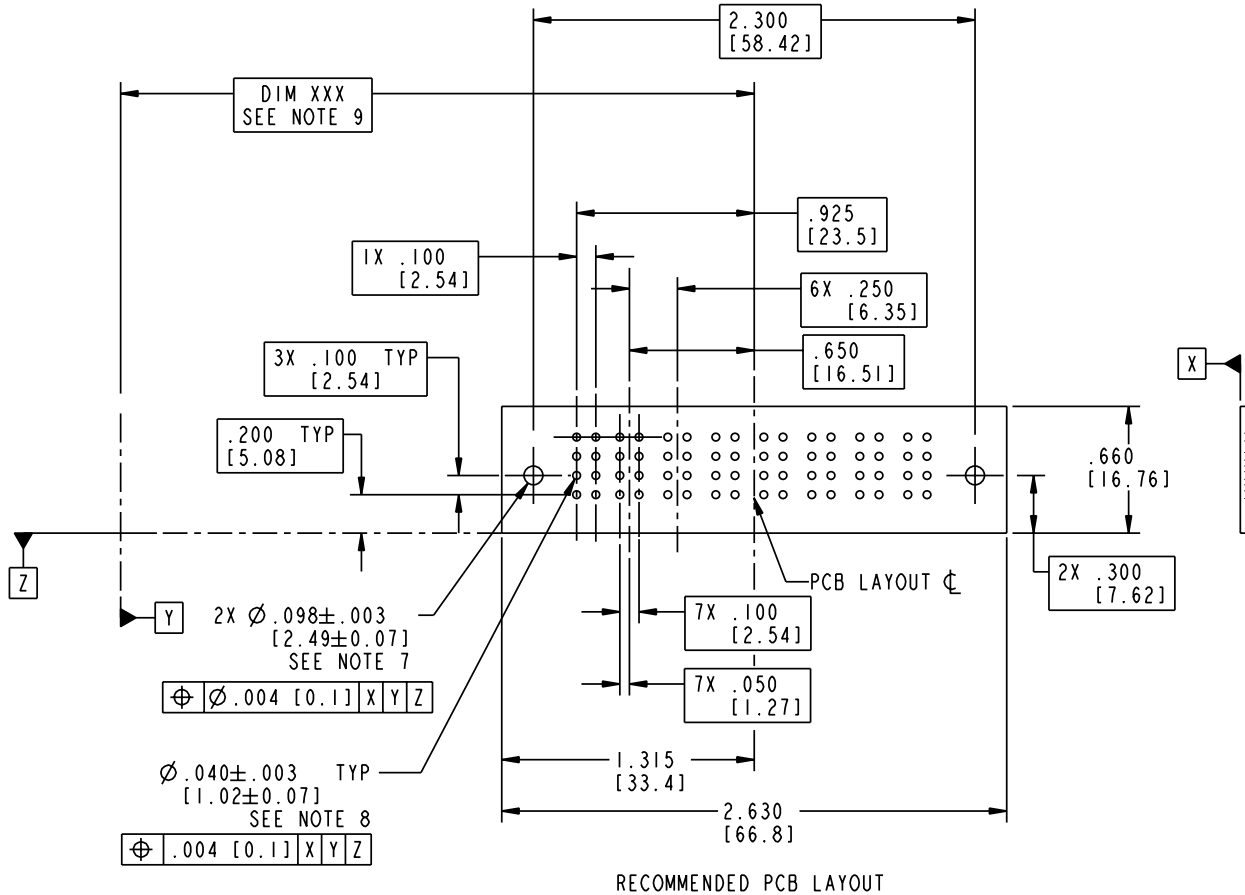
Printed: Aug 12, 2007

Tous droits strictement réservés. Reproduction ou communication a des tiers interdite sous quelque forme que ce soit sans autorisation écrite du propriétaire. Propriété de c FCI. Droits de reproduction FCI.

**FCI**

All rights strictly reserved. Reproduction or issue to third parties in any form whatever is not permitted without written authority from the proprietor. Property of FCI. Copyright FCI.

PRODUCT NUMBER  
51721-10000807AA...  
NOTE (3)



mat'l code		SEE NOTE 2		tolerances unless otherwise specified		CUSTOMER		 www.fciconnect.com	
lfr	ecn no.	dr	date	linear	.XX±.01/0.X±0.3	projection	title		
A					.XX±.005/0.XX±0.13		8S + 7P		
				angles	.XXX±.0020/0.XXX±0.051	INCH/MM	RIGHT ANGLE SOLDER HEADER		
				dr	0°±2°	scale	product family	PwrBlade	code
				enr	STEVEN WANG 02/24/05	1:1	size	dwg no	213
				chr	STEVEN WANG 02/24/05		A	51721-10000807AA	sheet
				appd	VICTOR LIN 02/24/05				3 of 4
					JOSEPH HSIA 02/24/05				
sheet index	revision sheet								

Pro/E

PDM: Rev: A

STAT

code code  
Released 22526

Printed: Aug 12, 2007

PRODUCT NUMBER
51721-10000807AA--
NOTE (3)

NOTES:

1. DIMENSIONS AND TOLERANCES ARE IN ACCORDANCE WITH ASME Y14.5M, 1994 UNLESS OTHERWISE SPECIFIED.

CONNECTORS NOTES:

(2) HOUSING MATERIAL: UL 94 V-0 GLASS FILLED HIGH TEMP THERMO PLASTIC  
POWER CONTACT MATERIAL: COPPER ALLOY  
SIGNAL PIN MATERIAL: COPPER ALLOY

(3) PLATING:  
51721-10000807AA SIGNAL PINS: 30u"/0.76um Au OVER 50u"/1.27um Ni  
POWER CONTACTS: 50u"/1.27um Ni UNDER ALL WITH 30u"/0.76um Au ON CONTACT AREA AND 100u/2.54um SnPb ON PCB INTERFACE

51721-10000807AALF SIGNAL PINS: 30u"/0.76um Au OVER 50u"/1.27um Ni  
POWER CONTACTS: 50u"/1.27um Ni UNDER ALL WITH 30u"/0.76um Au ON CONTACT AREA AND 78u/2.00um Sn ON PCB INTERFACE

PART NUMBER 51721-10000807AALF MEETS EUROPEAN UNION DIRECTIVE AND OTHER COUNTRY REGULATIONS AS DESCRIBED IN GS-22-008.

(4) "MANUFACTURER" NAME, P/N, AND DATE CODE TO APPEAR ON THIS SURFACE.

5. PRODUCT SPECIFICATION GS-12-149.


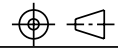
PCB - NOTES:

6. ALL HOLE DIAMETERS ARE FINISHED HOLE SIZE.

7. HOLD DOWN THROUGH HOLES ARE UNPLATED.

(8) Ø.0453±0.0010 [1.151±0.025] DRILLED HOLES PLATED WITH 0.0003 [0.008] MIN SnPb OVER .001 [0.03] TO .003 [0.08] Cu PLATING TO ACHIEVE Ø.040±.003 [1.02±.07] HOLE.

(9) "DIM XXX" TO BE DETERMINED BY THE CUSTOMER.

mat'l code		SEE NOTE 2		tolerances unless otherwise specified		CUSTOMER			
lfr	ecn no.	dr	date	linear	.XX±.01/0.X±0.3	COPY		www.fciconnect.com	
A				linear	.XXX±.005/0.XX±0.13	projection		title 8S + 7P	
				angles	XXX±.0020/0.XXX±0.051			RIGHT ANGLE SOLDER HEADER	
				dr	STEVEN WANG 02/24/05	INCH/MM		product family PwrBlade code 213	
				enrg	STEVEN WANG 02/24/05	scale		size dwg no 51721-10000807AA sheet 4 of 4	
				chr	VICTOR LIN 02/24/05	1:1			
				appd	JOSEPH HSIA 02/24/05				
sheet index	revision sheet								

Tous droits strictement réservés. Reproduction ou communication a des tiers interdite sous quelque forme que ce soit sans autorisation écrite du propriétaire. Propriété de c FCI. Droits de reproduction FCI.

FCI

All rights strictly reserved. Reproduction or issue to third parties in any form whatever is not permitted without written authority from the proprietor. Property of FCI. Copyright FCI.